

SUN FLOWER NEWSLETTER

July 2013 / Issue 13

www.sunandblack.com

From *Sun & Black Flowers*

SYNERGY IN STONE

Bring out the artist in you by the choice you make.

JAMES REDFIELD in his book "*The Celestine Prophecy*" says that rocks and forests are great sources of energy. Is this the reason why sacred spots are located on top of mountains and in the heart of forests?

Stone Temples built at ancient period is one refined example to prove the above statement.

It goes without saying that there is no better healer than nature, of a tired and over-wrought mind. Come evenings and you want to relax, maybe, you can now have nature in your own courtyard to relax your mind – stones in your landscaping.

Stones come in vibrating colors and with their own inheritance sync with your mind, which also can withstand weather and pollution. It is also the texture that

gives you that kinesthetic sense of beauty and peace. Along with this a great functional role is being played by architecture: durability and strength.

Stones can be used anywhere – the floor or the coping of your swimming pool, the inner & outer walls of the compound, the Elevation of the house, Pavers, Backdrop wall, artistic creations in the garden.

Take a look at the varieties;

Pictures speak better than words, for as they say.



The natural black Butch stone work at the sides and the flamed grey stone in the center compliments the whole architecture of this waterfall. The grey Flammed stone steps will certainly not fail to impress you.



Look at the picture closely, and you will agree that the black at the backdrop stands in a complementary contrast to the turquoise blue of the water. However, what adds to the actual beauty is the leather finish of the black and grey stones.



Terrace – the sitting area is done with three line dressed grey stone. The flamed stone below looks as if it were floating. The planter boxes are done with grey flamed stone with groove structure.



The grey stones are cut long, and they carry a natural finish. At the top the cobble black stone, Antique black stone has been laid through which the water tumbles.

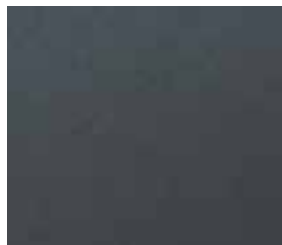
A combination of modern technology, nature and art.



Natural Cleft



Polished



Honed



Flamed



Sandblasted



Leather Finish

STONE FINISHES

Natural Cleft: This finish cannot be created, but occurs naturally as the layers are quarried. One side (back side) can be gauged to facilitate ease of “thin set” installation. And suitable for wall installations or paving purposes only.

Polished: When stones are polished to a high degree, they become smooth and can reflect like a mirror. They are stain resistant. Such highly polished stones find great use in counter tops and bathroom walls and also on table tops..

Honed: This is best for low maintenance; Honed finishes unlike polished finishes are not reflective. It produces a smooth, yet not glossy finish. Honed stone is the most commonly used and recommended internal floor finish.

Flamed: When a high-temperature flame is applied to stones, it causes the internal structure of the crystals to fracture, and thus makes the stone acquire a deeply textured surface.

Sandblasted: This is a rough, but tidy look created by applying a high pressure blast of sand to the stone’s surface.

LeatherFinish: Marble and granite lend easily to such finish. Leather finish combines beauty with function: it is slip resistant.



Split Face



Veneer Stone



Antiqued



Bush Hammered



Tumbled



Fleuri Cut / Sawn Cut



Ungauged



Chiseled Stones

Split Face: It has a flat back and uneven front surface, and creates the uneven look of protruding bricks. The surface evenness varies with the other stones.

Veneer Stone: Veneer may be made from different finishes, such as split face, cleft, honed, polished, flamed or tumbled.

Antiqued: A stone gets an antique finish when it is tumbled with water and sand and then acid washed. Such stones gain in elegance and old-world richness

Bush Hammered: The even grazing creates a non-slip surface ideal for high traffic external areas. The appearance of the bush hammered finish is industrial with a large number of close and small indents

Tumbled: Tumbling stones in a solution of sand, water and mild acid creates an old world, weathered look.

Fleuri Cut / Sawn Cut: When the stones are broken free of the cut layer they are shaped to uniform size. Saw Cut finish offers complimentary accent to other types of stone work. It is generally used for walls, gate entries, patios, landscape design applications etc.

Gauged vs. Ungauged: When it is cleft by machine or saw, it is gauged because a uniform thickness is formed. Ungauged stone is hand-cleft and its thickness may vary depending upon specific requirement of the customer.

Chiseled Stones: Chiseled stones acquire the groove like structure. The grooves are positioned in parallel with one another and give the appearance of a piece of linen fabric.

Our Services

- Landscape Design,
- Landscape Consultancy,
- Landscape Construction (Swimming pools, Water features, All types of Natural stone work, Wooden pergola, Gazebo, Drive way, Walkway)
- Landscape Lighting and Irrigation System
- Terrace Garden
- Vertical Garden
- Plants Nursery
- Landscape & Horticultural Maintenance

Design Head: Omprakash D.

Layout Design : Mohan S.

Editor: Dhivya Vinodh

Sun & Black Flowers

#S7, Brown Nest Apartments,
Old No: 72, New No: 38 2nd Main Road,
Gandhi Nagar, Adyar,
Chennai – 600 020.

Tel: 044 – 24466998/598, 9444086998,

E-mail: sunandblackflower@yahoo.com,
landscape@sunandblack.com

web: www.sunandblack.com